

August 2025 PC update



Chester villages and Gowy Police Update – August 25

Keep in touch

PCSO Netherton – Deborah.netherton@cheshire.police.uk

PC Harrison - Steve.Harrison@cheshire.police.uk

between the 1/08/25 and 31/08/25 Incidents and Crime committed

The update will include information relevant to the residents.

| Offence | number |
|----------------------|--------|
| Theft from a vehicle | 2 |
| Highways disruption | 15 |
| Concern for safety | 11 |
| Missing person | 5 |
| Burglary dwelling | |
| Theft | 2 |
| Drugs | |
| Suspicious person | 11 |
| wildlife | |
| Criminal damage | 2 |
| Personal nuisance | 1 |

- *Sample of incidents from the Chester villages Gowy, data for crime available on the Cheshire Constabulary website*
- <https://www.cheshire.police.uk/a/your-area/cheshire/cheshire-west-and-chester/kingsley-and-gowy/>

Residents are encouraged to look at their home security.

For advice visit our Cheshire Police website -

<https://www.cheshire.police.uk/cp/crime-prevention/residential-burglary/>

Please use 101 or Cheshire Police website to report any incidents. 999 in an emergency.

Community Engagement:

PCSO Netherton would like to share with you an update for Chester villages and Gowy for July/august 2025, we have been busy with youth engagements both with colleagues and other agencies this will continue over the summer months.

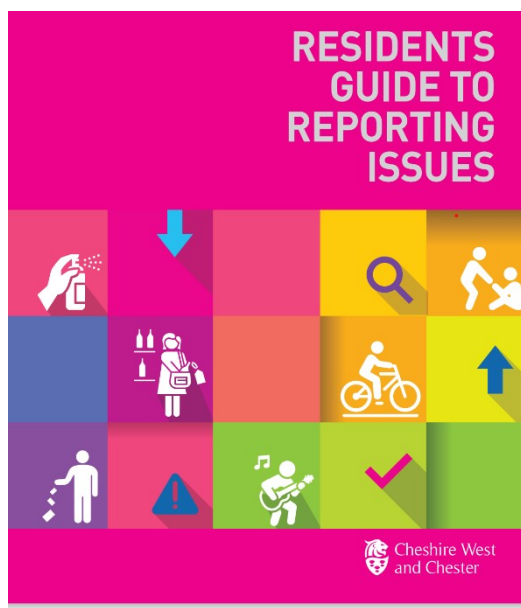
All PCSO's have been involved very young people, teenagers, and families in a positive setting. Throughout the summer we have had 'Op Revision' which will be a combination of patrols in public spaces, parks, open water areas, we will return repeat ASB locations to ensure we are available visible presence to the public. This operation is to provide reassurance to the community and gives us a chance to talk to lots of young people.

As part of Op revision, I have visited several parks, Waverton , Christleton , Barrow, Ashton Hayes, Mickle Trafford all have been in order and we have had no reports of ASB .

We have received reports of speeding Ebikes in several villages involving ASB and graffiti, over the coming weeks we will be targeting these groups and also visiting schools and sending information to parents about illegal Ebikes. please report any ASB with days and times so we can form a picture of what happening.

We have had a few thefts in the area of Great Barrow these have been on unlocked vehicles and unlocked sheds please make sure lock your vehicle and secure and out buildings and rember to report any suspicious activity.

[Residents Guide to Reporting Issues](#)



The link will take you to a guide to reporting different issues to the council.

We continue to offer you the chance for you to give your views



through 'Residents Voice' QR code which is available in different locations in the villages shops etc or on cheshire constabulary website, This is your platform to put forward your views about the Cheshire Constabulary Services, how we may make improvements, voice your concerns, and comments on over services.

Please choose Chester the area of which you live , which will be Kingsley or Gowy and Chester villages.

Thanks

Roadsafety

The speed device has been out in several areas Ashton Hayes and Waverton any drivers caught speeding were dealt with by the central ticket office.

I have given passing attention to areas where there have been reports of parking issues advisory notices have been placed on offending vehicles.

Parking is a ongoing issue in several villages, we will continue to monitor the areas and give advisory notices where needed.

Parking issues can be looked at by CWAC [Residents Guide to Reporting Issues](#)

[Waiting and parking \(238 to 252\) - The Highway Code - Guidance - GOV.UK \(www.gov.uk\)](#)



Surgery Dates

I will be trying out some pop up surgeries in different areas.

(PLEASE can these be advertised on Village website as they are aimed for public attendance?)

Friday 5th September Mickle Trafford village hall car park 10:00 hours to 1045 hours

Wednesday 15th September Ashton Hayes Recreation Centre 1500 hours to 1545 hour

Thursday 18th September 2025 Great Barrow playing park . 10:00 to 10:40 hours

Thursday 28th September 2025 at Christleton Methodist Church, The Square in the car park 1030 to 11.15 hours

Monday 29th September 2025 at Guilden Sutton shops, 1400 hours to 1445 hours.